

## Laboratory findings of Libyan patients with COVID-19 in intensive care unit

Rehab R. Walli <sup>1\*</sup>  , Rawia A. Eshwihdi <sup>1</sup> and Tomader Y. Elghnimi <sup>2</sup>

<sup>1</sup> Department of Biochemistry and Clinical Biochemistry, <sup>2</sup> Department of Pharmaceutical Industry  
Faculty of Pharmacy, University of Tripoli, Tripoli, Libya

\* Author to whom correspondence should be addressed

**Received:** 31-10-2022, **Revised:** 10-12-2022, **Accepted:** 14-12-2022, **Published:** 31-12-2022

**Copyright**© 2022. This open-access article is distributed under the *Creative Commons Attribution License*, which permits unrestricted use, distribution, and reproduction in any medium, provided the original work is properly cited.

### HOW TO CITE THIS

Walli et al. (2022) Laboratory findings of Libyan patients with COVID-19 in intensive care unit.  
Mediterr J Pharm Pharm Sci. 2 (4): 88-93. [Article number: 94]. <https://doi.org/10.5281/zenodo.7479806>

**Keywords:** COVID-19, C-reactive protein, D- dimer, Libya, mean corpuscular hemoglobin

**Abstract:** The 2019 coronavirus disease (COVID-19) was declared by the World Health Organization as a pandemic on 11<sup>th</sup> March 2020 which spread rapidly all over the world. COVID-19 disease has different clinical presentations, ranging from asymptomatic to severe symptoms. Laboratory findings are important in determining which therapeutic strategies to seek and to identify severe cases initially. In this study, we compared the results of C-reactive protein, D-dimer, blood electrolytes and mean corpuscular hemoglobin concentration between survivors and non-survivors of 22 Libyan patients with COVID-19 present in the intensive care unit at Maitika Isolation Center (Tripoli, Libya) in the period of January to June 2021. We could not detect any significant difference in C-reactive protein between survivors and non-survivors but a significant difference in D-dimer level was observed. Non-survivor COVID-19 patients have a higher level of D-dimer. Moreover, a statistically significant difference in chloride and sodium levels but not in potassium levels were detected. A marked lower mean corpuscular hemoglobin in non-survivor than survivor COVID-19 patients was shown. Thus, these parameters could act as biomarkers for COVID-19 patients.

### Introduction

The COVID-19 pandemic (coronavirus pandemic), is global pandemic of coronavirus disease 2019 (COVID-19) caused by severe acute respiratory syndrome coronavirus 2 (SARS-CoV-2). COVID-19 patients can progressively develop serious complications, including sepsis, acute respiratory failure, metabolic acidosis, heart failure, and kidney injury, and eventually die [1]. C-reactive protein (CRP) is a plasma protein that is synthesized by the liver and induced by different inflammatory mediators such as IL-6 [2]. Despite being nonspecific, D-dimer is used clinically as a biomarker for different inflammatory complaints and an increase in its levels is associated with greater severity of the disease [3]. This protein can activate the complement through the classic route and has the ability to modulate the function of phagocytic cells, properties that suggest it would play a role in the efficacy of infectious agents and damaged cells [4]. The CRP marker was found to be significantly increased in the initial phases of the infection for severe COVID-19 patients, also prior to indications of critical findings with CT [5]. Importantly, CRP has been associated with disease development and it is an early predictor for severe

COVID-19. The normal range of CRP is up to 5.00 milligrams per liter [6]. Coagulation biomarker (D-dimer) is a soluble fibrin degradation product that results from ordered breakdown of thrombi by the fibrinolytic system markedly elevated D-dimer is common in COVID-19 patients and is associated with poor prognosis. However currently the interpretation of D-dimer during disease monitoring is unclear, as it may not be directly related to disease severity [7]. Many hematologic biomarkers have been used to stratify COVID-19 patients including white blood cell (WBC) count, lymphocyte count, neutrophil count, neutrophil-lymphocyte ratio (NLR), platelet count, eosinophil count and hemoglobin [8]. In addition, the hematological biomarker, mean corpuscular hemoglobin (MCH) represents the average amount of hemoglobin in the red blood cell. The normal range of MCH is 28 to 30 picograms and normal range of D-dimer is up to 0.50 milligram per liter. The level of blood electrolytes including sodium, potassium and chloride is important in calculating the anion gap and correcting acid-base imbalance. The normal range of blood sodium is 135.0 to 150.0 milli-mole per liter, potassium is 3.50 to 5.50 milli-mole per liter and chloride is 98.0 to 107.0 milli-mole per liter [9]. The purpose of this study is to investigate how age affects the mortality COVID-19 patients and to find if there is a marked change in the results of some blood tests seen at the first visit and their association with the mortality of COVID-19 patients in Libya.

## Materials and methods

Twenty-two patients were tested for positive COVID-19 admitted to the intensive care unit in the Isolation Center of Mitiga Hospital from January to June 2021. Thirteen patients are male patients and eight patients are female patients. 14 of the 22 patients were discharged (survivors) and eight patients were deceased (nonsurvivors).

*C-reactive protein test:* This test is based on the principle of latex agglutination. When latex particles coated with human anti-CRP are mixed with a patient's serum containing CRP, a visible agglutination reaction will take place within two minutes. This procedure is according to the instructions given in the product [10, 11].

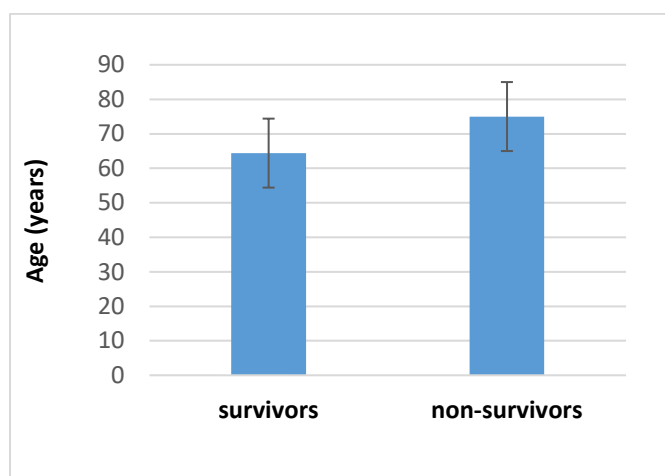
*D-dimer test:* The Alere Triage® D-Dimer test device contains all the reagents necessary for the quantification of cross-linked fibrin degradation products containing D-dimer in EDTA anticoagulated whole blood or plasma specimens [11]. MCH results are taken from the complete blood count result of each patient using Mindray BC-3600 Auto Hematology Analyzer [12].

*Statistical analysis:* Data are transformed into a Microsoft Excel spreadsheet and analyzed using Statistical Package for Social Sciences (SPSS) Version 23. Mean and standard deviations were used for the comparison of continuous variables ensuring normal distribution. An independent sample *t*-test was applied to compare survivors' biochemical and hematological findings to non-survivors in patients with COVID-19. The level of significance difference was set at  $p < 0.05$  [13].

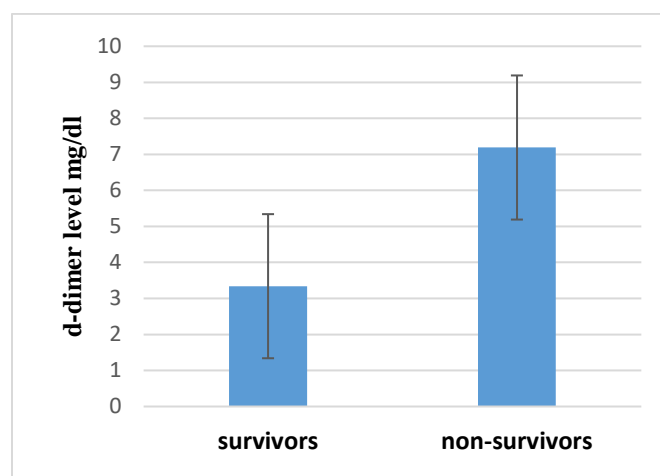
## Results

**Figure 1** shows the mean age of the patients in years ( $n=22$ ) included in this study, the youngest patient was male 38 years old and the oldest patient was female 107 years old, however, both of them were discharged. There is no significant difference between both groups (survivors and non-survivors). The non-survivor's patients are older than survivor's patients by about 10.0%. **Figure 2** presents the average serum concentration of CRP in mg/dl for both groups discharged (survivors) and died (non-survivors) patients. Thus, the mean of both groups is almost the same with no statistically significant difference found by Student *t*-test. The highest level of serum concentration was more than 200 mg per liter for the discharged female. In **Figure 3**, the mean plasma concentrations of D-

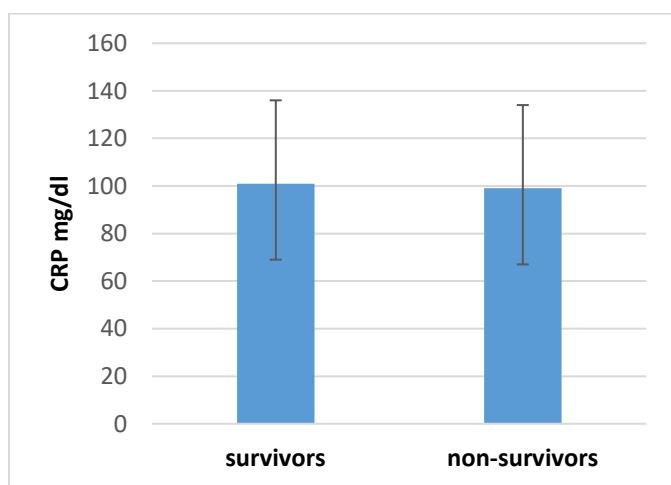
dimer of both groups are shown. Thus, the levels of D-dimer for non-survivor patients are almost double that the survivors' patients with the highest results except for three male patients discharged but the other individually were at normal values (0.73, 0.32 and <0.25 mg/l). **Figure 4** represents the mean ( $\pm$ SD) of serum sodium level in COVID-19 patients. Thus, a markedly high level is seen in non-survivor patients as compared with survivor patients. **Figure 5** shows the average potassium level, the results for non-survivors were much higher than the survivor's patients. This is the same for serum chloride concentrations as shown in **Figure 6**. Thus, significantly high levels of serum chloride of non-survivor patients have higher values than the survivor's patients. However, in **Figure 7**, the average mean concentration of MCH is higher in survivor patients than in the non-survivor patients with COVID-19 which had a lower concentration.



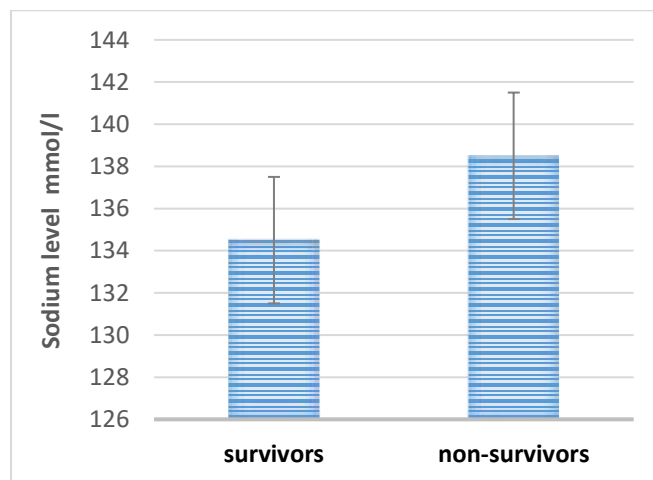
**Figure 1:** Age distribution of the COVID-19 Libyan patients



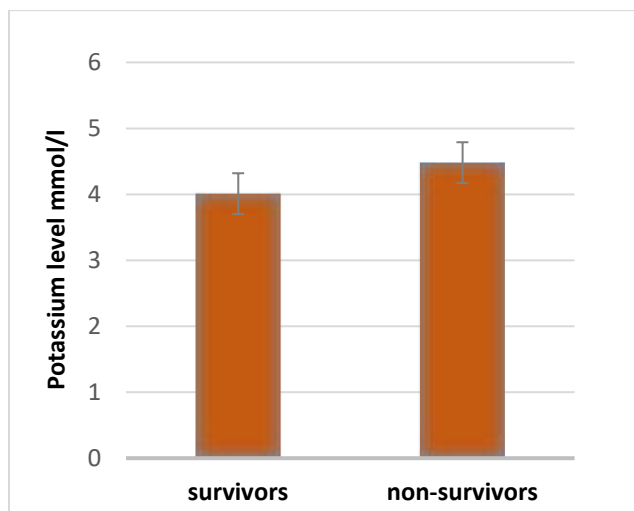
**Figure 3:** Plasma D-dimer concentration in COVID-19 Libyan patients



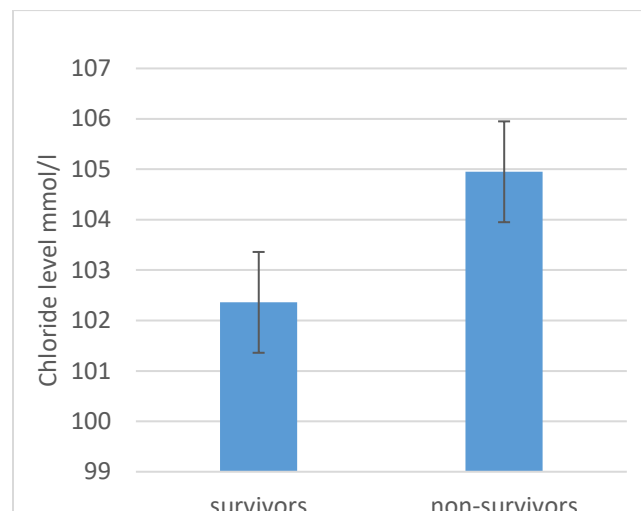
**Figure 2:** Mean corpuscular hemoglobin level in COVID-19 Libyan patients



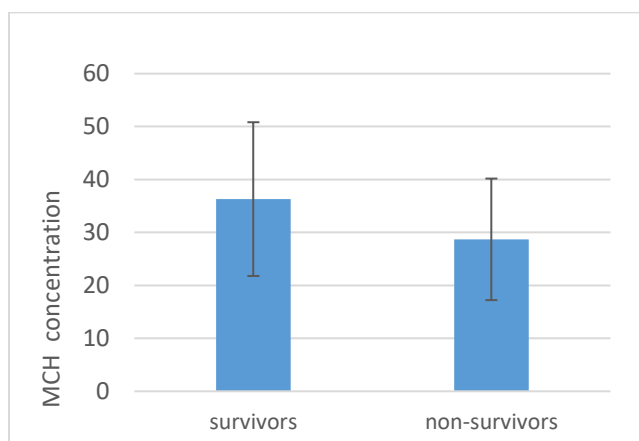
**Figure 4:** Serum sodium levels in COVID-19 Libyan patients



**Figure 5:** Serum potassium levels in COVID-19 Libyan patients



**Figure 6:** Serum chloride levels in COVID-19 Libyan patients



**Figure 7:** Mean corpuscular hemoglobin concentration in COVID-19 Libyan patients

## Discussion

It has been shown that many biochemical parameters become altered in COVID-19 patients and these parameters have been associated with the severity of the disease and in some cases correlated with the prognosis of the patients [14 - 16]. Thus, this study analyzes the laboratory findings of COVID-19 survivors and non-survivors at the time of intensive care unit admission. It was found that the mean age of the patients who died from COVID-19 was higher than the surviving patients. This finding is in good agreement with the earlier findings on patients with COVID-19 [17]. Generally, the older population has a high rate of comorbidities, limited organ function, reduced lung capacity, impaired immune system, biological aging and more severe complications. These are the common reasons hence clinicians should treat them with more attention considering them as a high-risk group [18].

It has been recorded that elevation of D-dimer as well as C-reactive protein and interleukin 6 (IL-6) is associated with an unfavorable prognosis of the disease [19, 20]. In this study, we could not detect any significant difference in CRP between patients of survivors and non-survivors but it is noticed a high significant level of D-dimer in

non-survivor COVID-19 patients. Also, some hematological differences have been correlated with the progression of COVID 19 such as lymphopenia, thrombocytopenia, neutrophilia and hypoalbuminemia [14, 15]. Thus, there is a marked lower MCH concentration in non-survivors than survivors. A previous study showed that electrolyte disturbances may affect the prognosis of COVID-19 patients [16]. Indeed, in this study, it is found that non-survivors have a high levels of blood electrolytes such as sodium, potassium and chloride. A statistically significant difference in chloride level has profoundly been detected. On the other hand, there is a drawback for the present study of using a small number of the participants that could limit the findings and to support this, a large sample is recommended.

**Conclusion:** This study guides clinicians to facilitate appropriate supportive management compared between survivors and non-survivors cases of patients with COVID-19 disease in some biochemical characteristics.

**Author contributions:** RRW conceived, designed the study, and performed the analysis and interpretation of data. RAE collected and analyzed the data. TYE drafted the manuscript. All authors approved the final version of the manuscript and agreed to be accountable for its contents.

**Conflict of interest:** The authors declare the absence of any commercial or financial relationships that could be construed as a potential conflict of interest.

**Ethical issues:** Including plagiarism, informed consent, data fabrication or falsification and double publication or submission were completely observed by the authors.

**Data availability statement:** The raw data that support the findings of this article are available from the corresponding author upon reasonable request.

**Author declarations:** The authors confirm that all relevant ethical guidelines have been followed and any necessary IRB and/or ethics committee approvals have been obtained.

## References

1. Farcas GA, Poutanen SM, Mazzulli T, Willey BM, Butany J, Asa SL, Faure P, Akhavan P, Low DE, Kain KC, (2005) Fatal severe acute respiratory syndrome is associated with multiorgan involvement by coronavirus. The Journal of Infectious Diseases. 191 (2): 193-197. doi: 10.1086/426870
2. Thompson S, Bohn MK, Mancini N, Loh TP, Wang CB, Grimm M, Yuen K-Y, Mueller R, Koch D, Sethi S, Rawlinson WD, Clementi M, Erasmus R, Lepointier M, Kwon GC, Menezes ME, Patru M-M, Gramegna M, Singh K, Najjar O, Ferrari M, Lippi G, Adeli K, Horvath AR (2020) IFCC interim guidelines on biochemical/hematological monitoring of COVID-19 patients. Clinical Chemistry and Laboratory Medicine. 58 (12): 2009-2016. doi: 10.1515/cclm-2020-1414
3. Xiang J, Wen J, Yuan X, Xiong S, Zhou XUE, Liu C, Min X (2020) Potential biochemical markers to identify severe cases among COVID-19 patients. medRxiv. 2020.03.19.20034447. doi: 10.1101/2020.03.19.20034447
4. Henry BM, de Oliveira MHS, Benoit S, Plebani M, Lippi G (2020) Hematologic, biochemical and immune biomarker abnormalities associated with severe illness and mortality in coronavirus disease 2019 (COVID-19): a meta-analysis. Clinical Chemistry and Laboratory Medicine. 58 (7): 1021-1028. doi: 10.1515/cclm-2020-0369
5. Kumar R, Singh V, Mohanty A, Bahurupi Y, Gupta PK (2021) Corona health-care warriors in India: knowledge, attitude, and practices during COVID-19 outbreak. Journal of Education and Health Promotion. 10 (44): 1-8. doi: 10.4103/jehp.jehp\_524\_20
6. Pepys MB, Hirschfield GM. C-reactive protein: a critical update (2003) Journal of Clinical Investigation 2003; 111(12): 1805-1812. Epub2003/06/19. doi: 10.1172/JCI18921
7. Wang D, Li R, Wang J, Jiang O, Gao C, Yang J, Ge L, Hu Q (2020) Correlation analysis between disease severity and clinical and biochemical characteristics of 143 cases of COVID-19 in Wuhan, China: a descriptive study. BMC Infectious Diseases. 20: 519. doi: 10.1186/s12879-020-05242-w

8. Liu J, Liu Y, Xiang P, Pu L, Xiong H, Li C, Zhang M, Tan J, Xu Y, Song R, Song M, Wang L, Zhang W, Han B, Yang L, Wang X, Zhou G, Zhang T, Li B, Wang Y, Chen Z, Wang X (2020) Neutrophil-to-Lymphocyte ratio predicts critical illness patients with 2019 coronavirus disease in the early stage. *Journal of Transitional Medicine*. 18 (1): 206. doi: 10.1186/s12967-020-02374-0
9. Sarhan AR, Hussein TA, Flaih MH, Hussein KR (2021) A biochemical analysis of patients with COVID-19 infection. *Biochemistry Research International*. 2021: 1383830. doi: 10.1155/2021/1383830
10. Riley RS, Gilbert AR, Dalton JB, Pai S, McPherson RA (2016) Widely used types and clinical applications of D-Dimer assay. *Laboratory Medicine*. 47 (2): 90-102. doi: 10.1093/labmed/lmw001
11. Bray C, Bell LN, Liang H, Haykal R, Kaiksow F, Mazza JJ, Yale SH (2016) Erythrocyte sedimentation rate and C-reactive protein measurements and their relevance in clinical medicine. *Wisconsin Medical Journal*. 115 (6): 317-321. PMID 29094869.
12. Shu G, Lu H, Du H, Shi J, Wu G (2013) Evaluation of Mindray BC-3600 hematology analyzer in a university hospital. *International Journal of Laboratory Hematology*. 35 (1): 61-69. doi: 10.1111/j.1751-553X.2012.01464.x
13. Snedecor G, Cochran W (1967) *Statistical methods*. Oxford & IBH Publishing Co, New Delhi, 1967: 381-418.
14. Mousavi SA, Rad S, Rostami T, Rostami M, Mousavi SA, Mirhoseini SA, Kiumarsi A (2020) Hematologic predictors of mortality in hospitalized patients with COVID-19: a comparative study. *Hematology*. 25(1):383-388. doi: 10.1080/16078454.2020.1833435
15. Arjita IPD, Sabariah S, Anulus A (2020) Complete blood cells findings among covid-19 in-patients at COVID-19 Reference Hospitals, West Nusa Tenggara. *Medical Laboratory Technology Journal*. 6 (2): 152-162. doi: 10.31964/mltj.v6i2.339
16. Pourfridoni M, Abbasnia SM, Shafaei F, Razaviyan J, Heidari-Soureshjani R (2021) Fluid and electrolyte disturbances in COVID-19 and their complications. *BioMed Research International*. 2021:6667047. doi: 10.1155/2021/6667047
17. Shahid Z, Kalayanamitra R, McClafferty B, Kepko D, Ramgobin D, Patel R, Aggarwal CS, Vunnam R, Sahu N, Bhatt D, Jones K, Golamari R, Jain R (2020) COVID-19 and older adults: what we know. *Journal of the American Geriatrics Society*. 68 (5): 926-929. doi: 10.1111/jgs.16472
18. Kang SJ, Jung SI (2020) Age-related morbidity and mortality among patients with COVID- 19. *Infection and chemotherapy*. 52 (2): 154-164. doi: 10.3947/ic.2020.52.2.154
19. Qin C, Zhou L, Hu Z, Hu Z, Zhang S, Yang S, Tao Y, Xie C, Ma K, Shang K, Wang W, Tian D-S (2020) Dysregulation of immune response in patients with coronavirus 2019 (COVID-19) in Wuhan, China. *Clinical Infectious Diseases*. 71 (15): 762-768. doi: 10.1093/cid/ciaa248
20. Sharifpour M, Rangaraju S, Liu M, Alabyad D, Nahab FB, Creel-Bulos CM, Jabaley CS (2020) C-Reactive protein as a prognostic indicator in hospitalized patients with COVID-19. *PLoS One*. 15 (11): e0242400. doi: 10.1371/journal.pone.0242400